

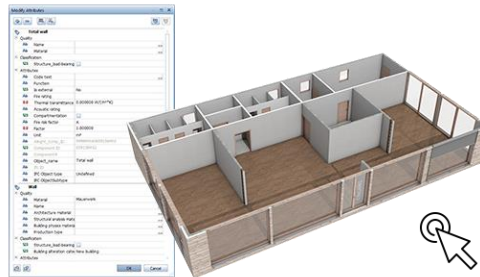


50 years of
University
of Split

INTERNATIONAL SPLIT SUMMER SCHOOL 2024

COURSE: BIM FOR ARCHITECTS

Contact person: Gianmarco Marcello Ćurčić
Phone: +385 91 200 6404
Mail: marco@baldinistudio.hr



Main topics

- BIM modelling approach
- Making of 3D BIM model according to drawings
- Carpentry installation, finishings and furniture
- Generating plans from 3D BIM model
- Export material quantities from 3D BIM model
- Bimplus platform – interoperability and collaboration with other professional groups
- Allplan rendering possibilities and Lumion presentation

Programme structure

- 5-day course
- On the 1st and 5th day lecture is organized for all participants together
- Every student gets recorded education

Important dates

Course dates:

02/09/2024 – 06/09/2024

Deadline for application:

08/07/2024

Confirmation of the course:

10/07/2024

Payment due by:

18/08/2024

Price of the course:

300 € (tax included)

Program plan

Day 1

- Introduction to BIM approach in architecture and basics of BIM standardization, Employer's Information Requirements – EIR, BIM Execution Plan – BEP. Introduction to basic features of Allplan software. Creating project and content processing of the interface. Explanation of the terms „structure“ and „bdrawing“. Definition of building structures for BIM projecting.

Day 2

- Modelling and attributes defining of specific architectural elements; wall, beam, panel, openings, lintel, staircase. Explanation of the concept of defining the height settings of components, custom planes, managing the planes and layers. Level copying.

Day 3

- Introduction with room functions and finishings. Grouping and description of rooms as well as generating living space and finishing reports. Installation of furniture from Allplan Library and importing .skp files. Roof modelling. Rendering and animation of BIM model. Generating quantity of material reports

Day 4

- Making of associative views, perspective views, cross sections and isometry cross sections. Analysis of possibilities of functions section and view. Dimensioning of a drawing and preparation for print. Export of the BIM model in .pdf and .ifc forms. Introduction to other import/export options. Making of form work plan including automatic elements description.

Day 5

BIM collaboration and Allplan communication with other software in interoperable and collaborative BIM surrounding as well as introduction with Common Data Environment – CDE through Bimplus and Bluebeam. Marking up collisions and giving tasks to various participants in collaborative BIM surrounding. Lumion presentation (optional).

Lectures

- Gianmarco Ćurčić Baldini, dia.
(CEO of Baldinistudio d.o.o. Zagreb)
- Tibor Maričević, mag.ing.aedif
(BIM trainer & Allplan specialist – Baldinistudio d.o.o. Zagreb)